

E/S

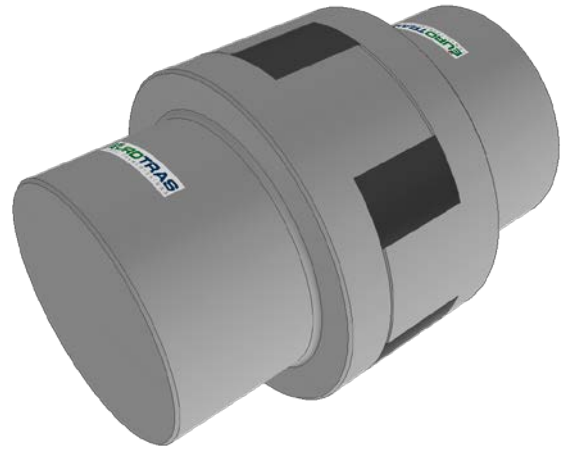
GIUNTI ELASTICI A SETTORE
ELASTIC SECTOR COUPLINGS

Giunto standard: ghisa UNI EN 1561 EN-GJL-HB 200

Standard coupling: cast iron UNI EN 1561 EN-GJL-HB 200

Settore in gomma: Shore 75-80 temperatura di esercizio -20° +80°

Rubber sector: Shore 75-80 operating temperature -20° +80°



Grandezza Size	T _{KN} [Nm]	T _{K max} [Nm]	Velocità massima [giri/min] Max. speed [rpm]	Ø grezzo/max. raw/max. [mm]	F [mm]	L [mm]	H [mm]	M [mm]	S [mm]	n°settore in gomma n°rubber sector	peso weight [Kg]
E70S	60	120	4000	- / 35	70	103	19	55	42	1	2
E85S	140	280	4000	- / 45	85	124	26	70	49	1	3,5
E100S	230	460	4000	- / 50	100	146	28	75	59	1	5,2
E120S	420	840	4000	- / 60	120	170	34	90	68	1	8,3

