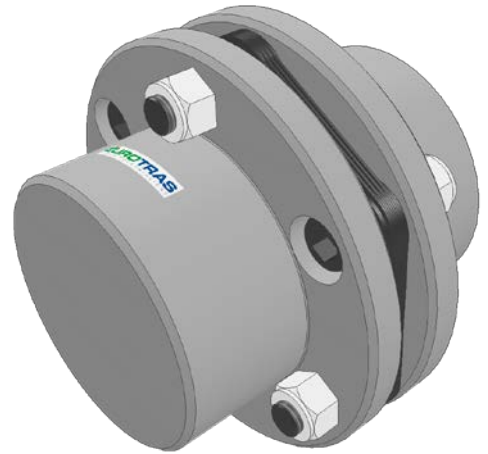


# FA

**GIUNTI FLESSIBILI A LAMELLE**  
**FLEXIBLE LAMELLAE COUPLINGS**

**Giunto standard:** ghisa UNI EN 1561 EN-GJL-HB 200  
**Standard coupling:** cast iron UNI EN 1561 EN-GJL-HB 200  
**Perni standard:** acciaio fosfatato al manganese  
**Standard pivot:** manganese phosphated steel  
**Pacco lamellare PN:** acciaio fosfatato al manganese temperatura di esercizio -30° +120°  
**PN lamellae pack:** manganese phosphated steel operating temperature -30° +120°



**Varianti/Variants:**

**FA xxx GN** → Pacco lamellare: lamelle C67/bussole AVP/bulloni 8.8/dadi INOX 8(6S)  
*Lamellae pack: lamellae C67/AVP bushes /8.8 bolts/nuts 8(6S)*

**FA xxx GTI** → Pacco lamellare: lamelle/bulloni/dadi in INOX 316  
*Lamellae pack: lamellae/bushes/nuts in INOX 316*

Grandezza Size	T <sub>KN</sub> [Nm]	T <sub>K max</sub> [Nm]	Velocità Massima [giri/min] Max Speed [rpm]	Ø grezzo/max. raw/max. [mm]	F [mm]	L [mm]	H [mm]	K [mm]	M [mm]	S [mm]	N° perni Pivot	Ø Perni Pivot [mm]	Peso weight [Kg]
FA95	250	500	6000	- / 32	90	81	11	10	48	35	4	10XM10	2
FA110	540	1080	6000	- / 42	110	101	11	10	66	45	6	10XM10	3,5
FA135	1260	2520	6000	- / 50	135	113	13	12	80	50	6	12XM12	6
FA150	1420	2840	5300	- / 60	150	133	13	14	95	60	6	12XM12	10
FA186	2150	4300	4000	- / 75	185	160	20	15	115	70	8	12XM12	14
FA216	2600	5200	3300	- / 90	215	200	20	20	145	90	8	12XM12	26,5
FA226	2950	5900	3200	40 / 90	225	286	26	25	145	130	8	12XM12	38,5
FA227	3900	7800	3200	45 / 90	225	288	28	25	134	130	4	24XM24	45
FA250	6800	13600	3000	45 / 95	250	328	28	38	147	150	6	24XM24	50
FA300	8300	16600	2500	50 / 110	300	388	28	38	182	180	6	24XM24	80
FA350	11500	23000	2200	60 / 120	350	437	37	60	200	200	8	24XM24	120
FA400	18000	36000	1800	70 / 140	400	477	37	60	230	220	10	24XM24	180
FA450	23000	46000	1600	75 / 160	445	517	37	72	252	240	12	24XM24	250
FA500	34000	68000	1400	75 / 180	495	557	37	72	288	260	14	24XM24	350
FA550	45000	90000	1200	75 / 210	545	597	37	72	322	280	16	24XM24	450
FA630	90000	180000	1000	90 / 250	625	616	58	90	375	280	12	45XM30	730
FA680	120000	240000	900	140 / 270	680	616	58	90	405	280	14	45XM30	1020
FA800	160000	320000	760	130 / 280	795	656	58	90	420	300	16	45XM30	1150
FA900	220000	440000	680	130 / 300	900	656	58	90	450	300	18	45XM30	1300

