

FS/C40

GIUNTI FLESSIBILE A LAMELLE con spaziatore
LAMELLAE COUPLINGS with spacer

Giunto standard: acciaio UNI EN 10277 C40

Standard coupling: steel UNI EN 10277 C40

Perni standard: acciaio fosfatato al manganese

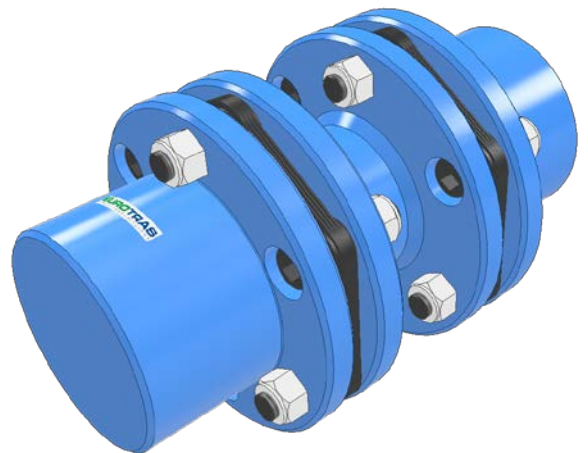
Standard pivot: manganese phosphated steel

Pacco lamellare PN: acciaio fosfatato al manganese temperatura di esercizio -30° +120°

PN lamellae pack: manganese phosphated steel operating temperature -30° +120°

Spaziatore: acciaio UNI EN 10305-1-E235+A-UNI EN 10297-1-E355+AR

Spacer: steel UNI EN 10305-1-E235+A-UNI EN 10297-1-E355+AR



A richiesta giunto completamente in INOX
Entirely stainless steel coupling upon request

Varianti/Variants:

FS xxx C40 GN → Pacco lamellare: lamelle C67/bussole AVP/bulloni 8.8/dadi 8(6S)
Lamellae pack: lamellae C67/AVP bushes/8.8 bolts/nuts 8(6S)

FS xxx C40 GTI → Pacco lamellare: lamelle/bussole/bulloni/dadi in INOX 316
Lamellae pack: lamellae/bushes/bolts/nuts in INOX 316

Grandezza Size	T _{KN} [Nm]	T _{Kmax} [Nm]	Velocità Massima [giri/min] Max Speed [rpm]	Ø grezzo/max. raw/max. [mm]	F [mm]	L [mm]	H [mm]	K [mm]	M [mm]	S [mm]	R [mm]	N° perni Pivot	Ø Perni Pivot [mm]	Peso weight [Kg]
FS 95 C40	640	1280	10800	- / 35	90	170	11	10	48	35	100	8	10XM10	3
FS 110 C40	920	1840	10800	- / 50	110	210	11	10	66	55	100	12	10XM10	6
FS 135 C40	1420	2840	10800	- / 60	135	230	13	12	80	65	100	12	12XM12	10
FS 150 C40	1600	3200	9540	- / 70	152	250	13	14	95	75	100	12	12XM12	16
FS 186 C40	2800	5600	7200	- / 95	185	300	20	15	125	80	140	16	12XM12	26
FS 216 C40	3500	7000	5940	- / 100	215	330	20	20	145	95	140	16	12XM12	44
FS 227 C40	7200	14400	5760	45 / 100	225	400	28	25	134	110	180	8	24XM24	53
FS 250 C40	12000	24000	5400	45 / 120	250	490	28	38	158	120	250	12	24XM24	85
FS 300 C40	18000	36000	4500	50 / 147	300	540	28	38	206	145	250	12	24XM24	135
FS 350 C40	27000	54000	3960	60 / 180	350	640	37	60	260	170	300	16	24XM24	220
FS 400 C40	36000	72000	3240	70 / 200	400	700	37	60	282	200	300	20	24XM24	300
FS 450 C40	50000	100000	2880	75 / 220	450	850	37	72	340	210	430	24	24XM24	432
FS 500 C40	70000	140000	2520	75 / 260	500	930	37	72	400	250	430	28	24XM24	638
FS 550 C40	88000	176000	2160	75 / 300	550	970	37	72	440	270	430	32	24XM24	832
FS 630 C40	180000	360000	1800	90 / 300	630	1090	58	90	430	295	500	24	45XM30	1500
FS 730 C40	220000	440000	1620	130 / 350	730	1120	58	90	500	310	500	28	45XM30	1985
FS 830 C40	290000	580000	1368	130 / 400	830	1140	58	90	615	320	500	32	45XM30	2700
FS 900 C40	370000	740000	1224	130 / 480	900	1180	58	90	700	340	500	36	45XM30	3600

